

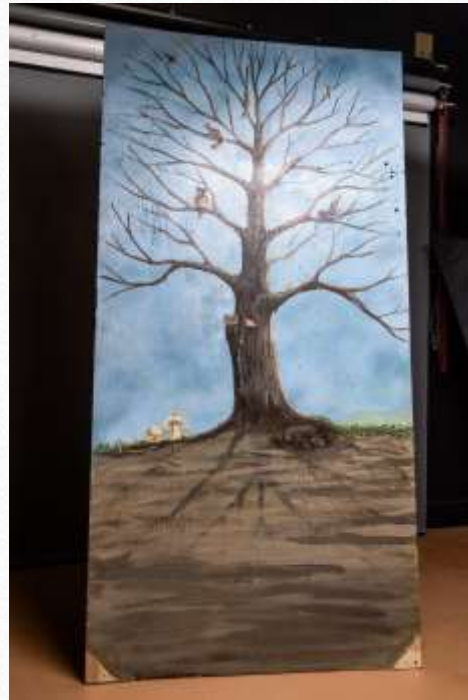
The Children's Tree

or **What Children have to say about Trees**

First there was a tree



That Sharon Rhue painted



And the tree went to the Dream Park



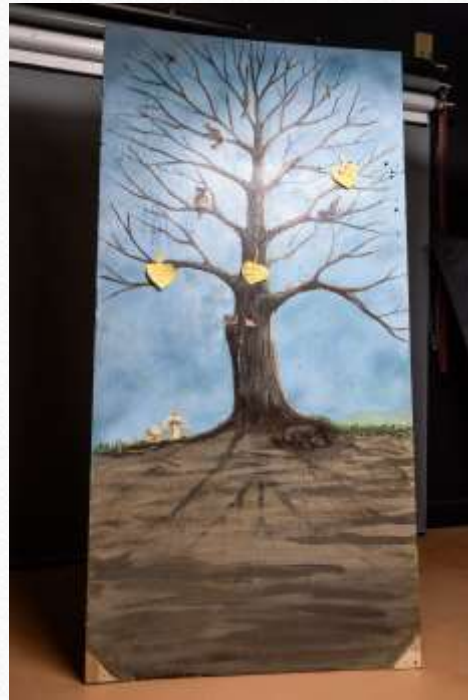
And Meagan wrote questions for the children
to help them **think about trees**



And the children started thinking about trees



And then some children in the park put some
leaves on the tree



And Meagan and some other moms helped the children think about
why trees were important to them



And the children put more leaves on the tree



And they had more ideas and put more leaves
on the tree



And even more ideas occurred to them



And soon the tree was full of both ideas and
leaves



But even more leaves were added by the children



Leaves of all different colors and all different
messages



And the tree went to the Re Leaf Birthday Party
(in the rain)



And the children there added more ideas



And more



Until the children helped tree to say lots and
lots of things



And the tree was completely filled with
knowledge and opinions about trees



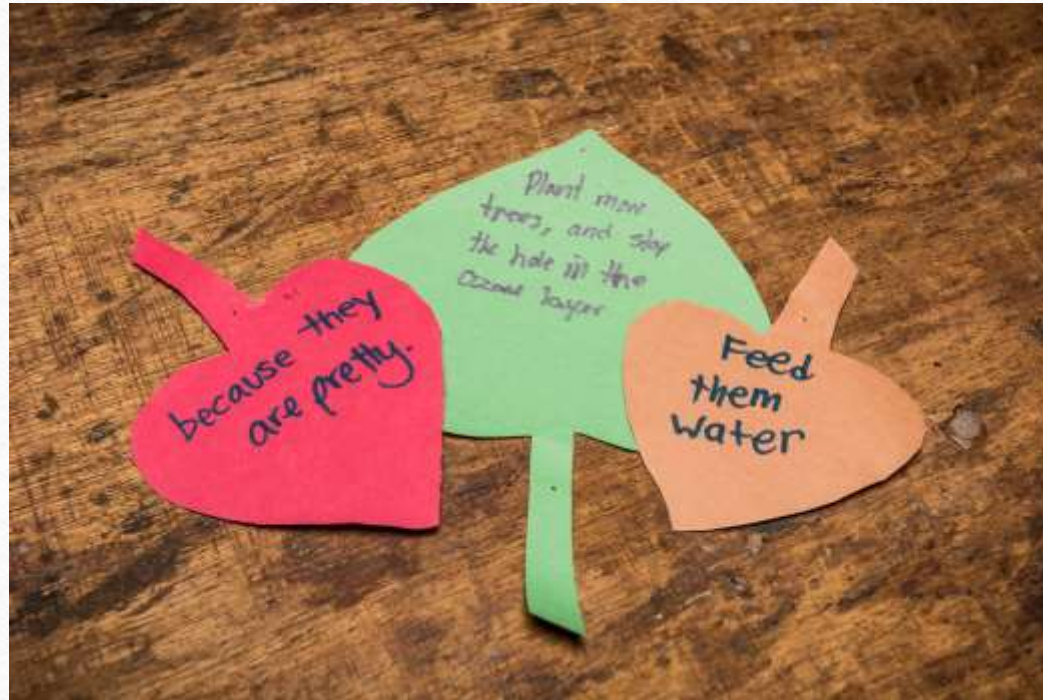
Sometimes what the children wrote was wise
statements



And what they said was profound !



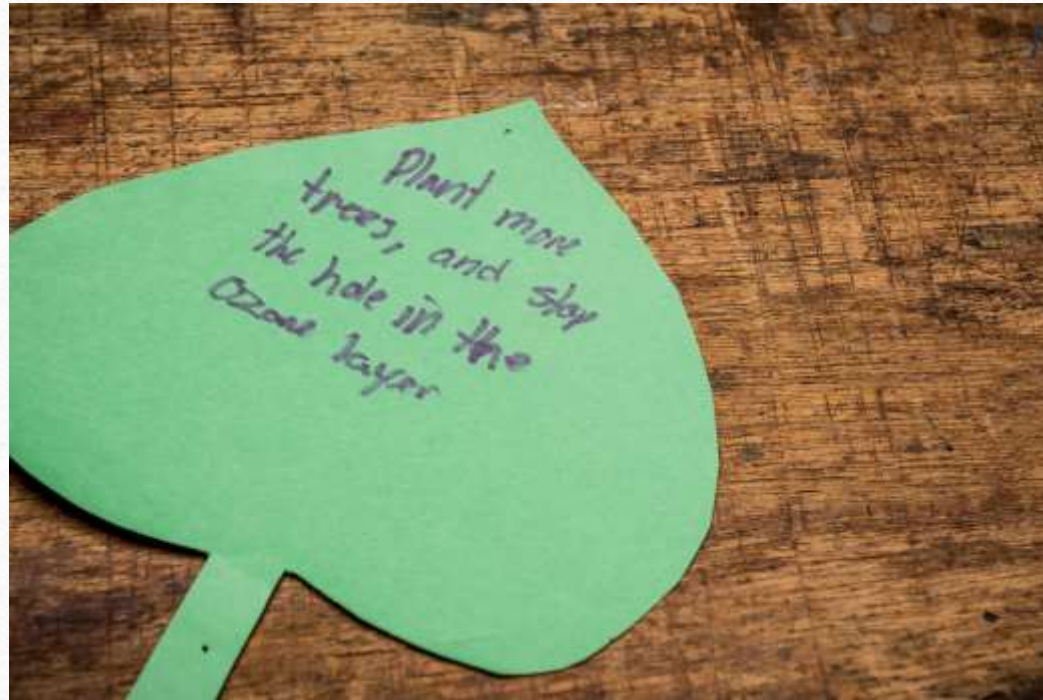
And informative



Sometimes what was written was inspiring



Sometimes what the children thought about
was scientific



Sometimes what was written was even silly



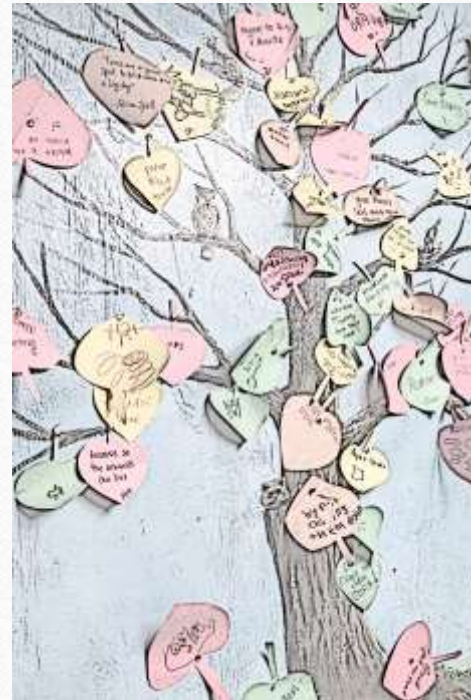
Sometimes what was written was even hard to read



But the children wrote these ideas from their heart. For like a tree each leaf was unique and not mass produced



It was like the children wrote a book for arbor day, for our birthday ,and for everyday





On Sharon's Tree

The End

